

Mathematics
Test A – Paper 2



Calculator allowed

First name _____

Last name _____

School _____

Time: 1 hour

Marks for Test A Paper 2	
Page(s)	Mark
12–13	
14–15	
16–17	
18–19	
20	
Total	

Remember

- You may use a calculator for any question in this test.
- You will need: pen, pencil, rubber, ruler and a calculator.
- Some formulae you might need can be found on the inside back cover of this book or downloaded from www.brookworth.co.uk.
- This test starts with easier questions.



This pencil symbol means write down your answer or show your working and write down your answer.

- 1 (a) A factory produces 2500 bottles of shower gel.
The bottles are to be packed in boxes.
Each box can hold a maximum of 42 bottles of shower gel.
How many boxes are needed?
Show your working.



..... boxes (2 marks)

- (b) Each bottle contains 0.35 litre of shower gel.
How many litres are there in 2500 bottles of shower gel?



..... litres (1 mark)

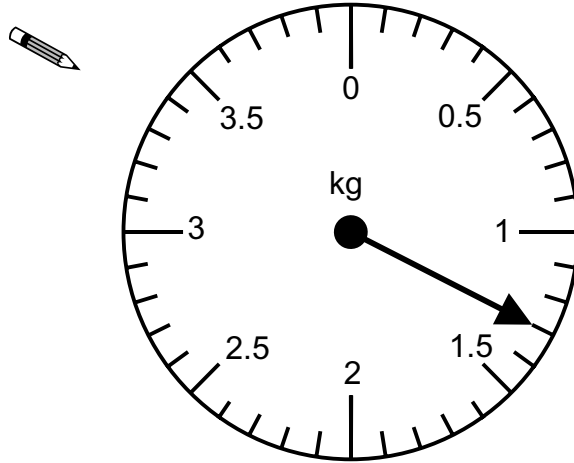
- (c) It costs the factory 46p to produce one bottle of shower gel.
How much would it cost the factory to produce 2500 bottles of shower gel?
Give your answer in pounds.



£ (1 mark)

Your marks

2 This is the dial of a weighing machine.



(a) Write down the mass that the dial is displaying.

 kg (1 mark)


(b) On the dial, draw the new position of the pointer when an **extra 2.1 kg** is added. (1 mark)

(c) A way to convert kilograms to pounds (lb) is to multiply by 2.2.

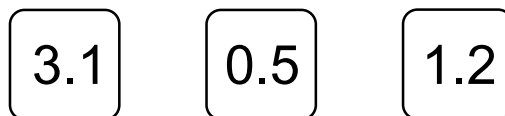
(i) Convert 6 kg to pounds.

 lb (1 mark)


(ii) Convert 5.5 lb to kilograms.

 kg (1 mark)


3 Here are 3 number cards.




Use the number cards to complete these calculations.

(a)  + = 4.3

(1 mark)

(b)  4.8 ÷ = 4

(1 mark)

(c)  × = 0.6

(1 mark)